

4

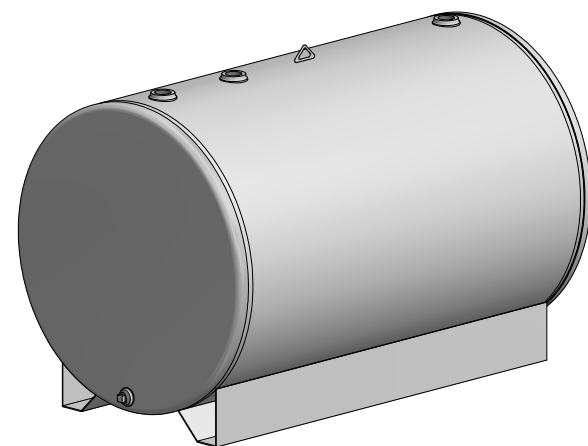
3

2

1

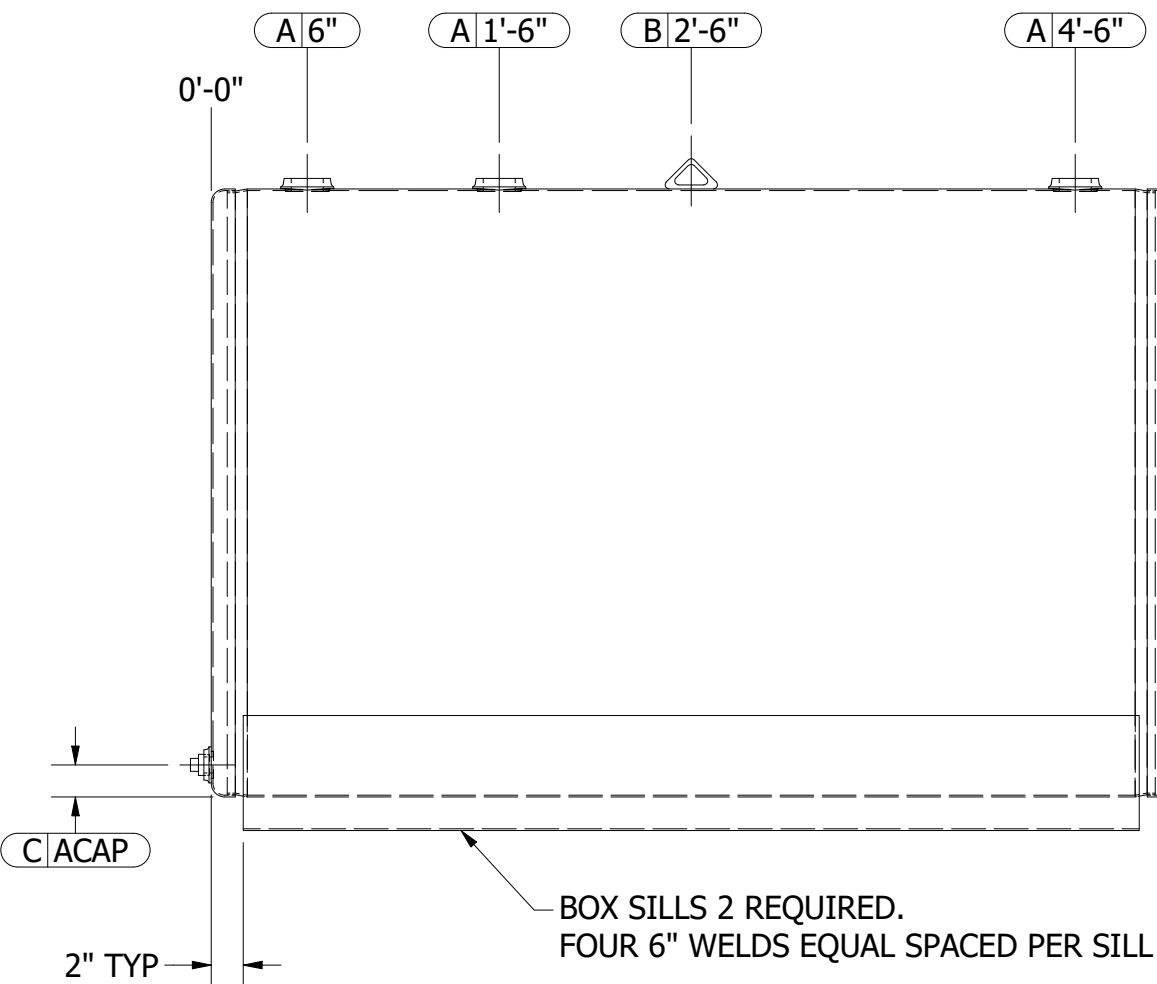
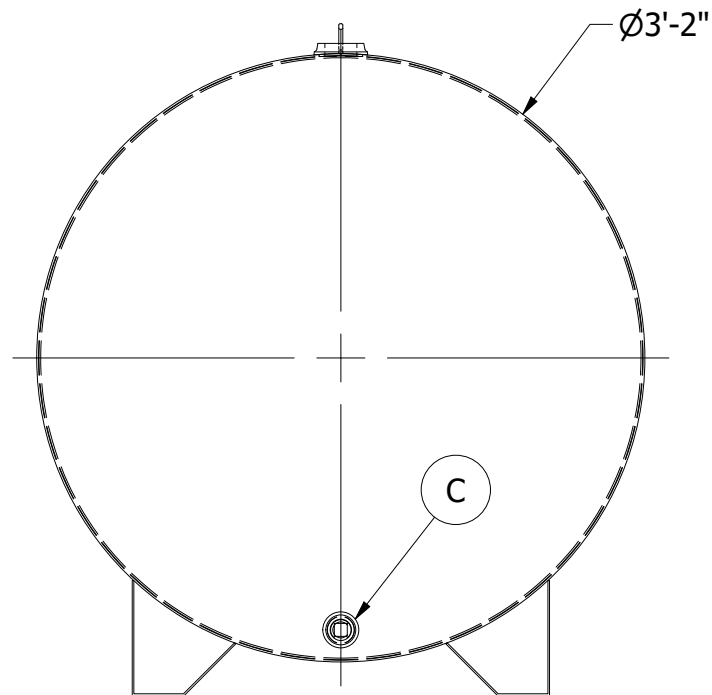
NOZZLE SCHEDULE

ITEM	QTY.	ITEM CODE	SIZE	TYPE	CLASS	NOTES
A	3	TF2CURVED	2"	FEMALE NPT	THRD. TANK FLANGE	
B	1	LIFTLUG2-900SM	SMALL	LIFTLUG	6,800# EACH	
C	1	TF2FLAT	2"	FEMALE NPT	THRD. TANK FLANGE	WITH STEEL PLUG



B

B



NOTES:

- CLEAN TANK COMPLETELY AFTER WELDING.
- INSPECT TANK FOR UNDERCUT & CONCAVE WELDS BEFORE SECOND TEST.
- SECOND TEST TANK AFTER SILLS ARE WELDED.

PRODUCT CODE: SW300FSK38D		DESCRIPTION: 300 GALLON NON-UL SKID TANK			STEEL TANK & FABRICATING CORP.		
FOR: STOCK		CUSTOMER APPROVAL: <input type="checkbox"/> MAKE NOTED CHANGES AND RE-SUBMIT <input type="checkbox"/> APPROVED WITH CHANGES NOTED <input type="checkbox"/> APPROVED AS DRAWN	QUANTITY: 6	CAPACITY: 300 GAL	APP. WEIGHT: 332 lbmass	COLUMBIA CITY, IN 46725	
PAINT: BLAST / ENAMEL WHITE		SIGNATURE: _____	DIAMETER: 38"	LENGTH: 5'	LABEL: NONE	DRAWN BY: KRM	CHECKED BY: GFS
			MATERIAL: A36/A1011	HEADS: 12GA	SHELL: 12GA	DATE: 6/15/2023	SHEET: 1 OF 1
			CUSTOMER ORDER#: -	STAFCO ORDER#: -	SCALE: 1 / 12	FILE NAME: SW300FSK38D.dwg	



4

3

2

1

A

A