

4

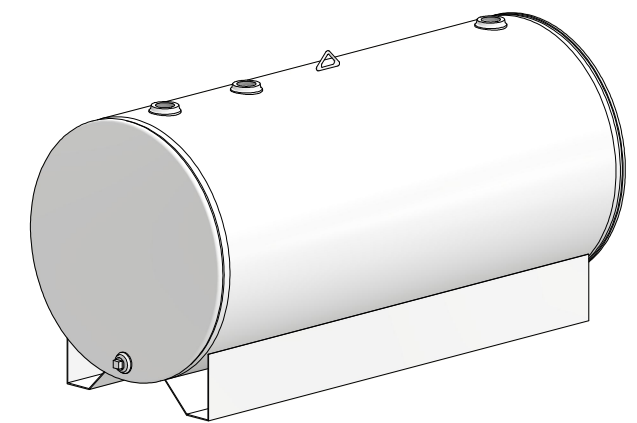
3

2

1

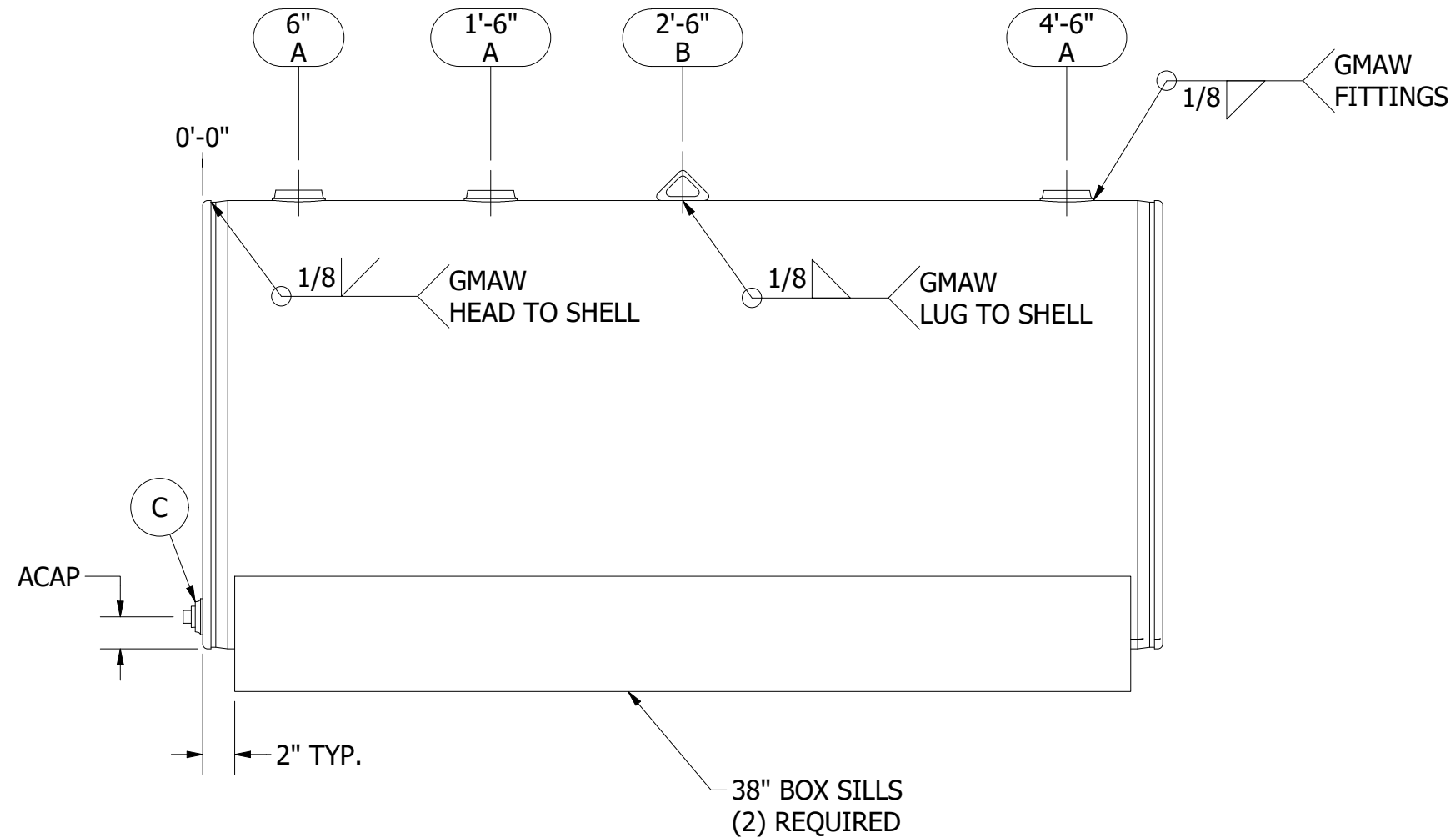
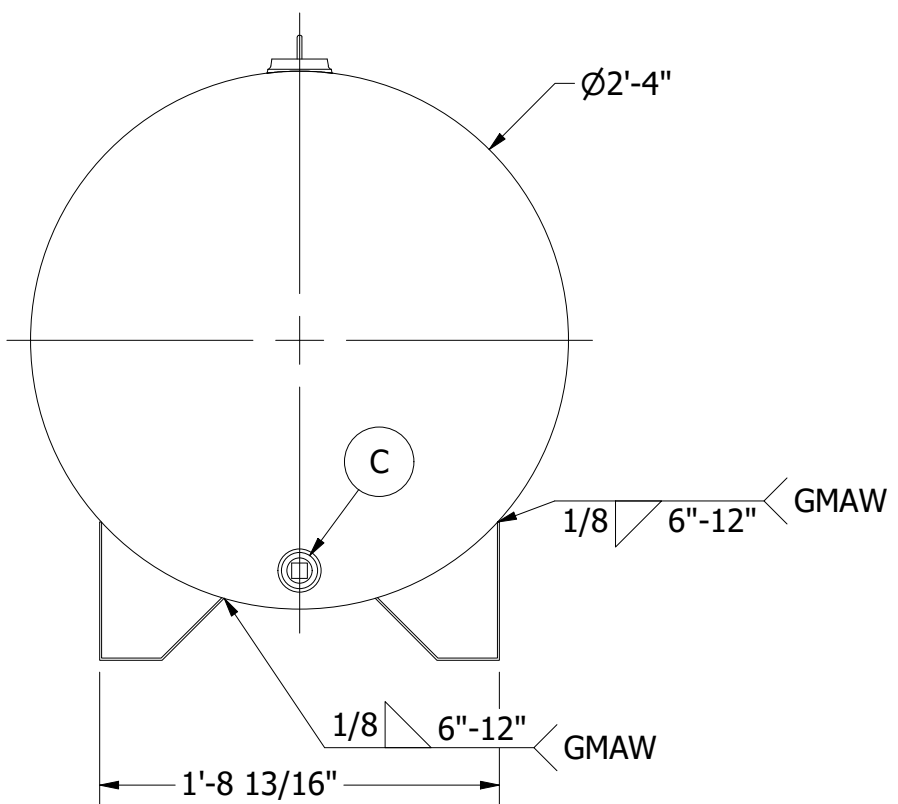
NOZZLE SCHEDULE

ITEM	QTY.	ITEM CODE	SIZE	TYPE	CLASS	NOTES
A	3	TF2CURVED	2"	FEMALE NPT	THRD. TANK FLANGE	
B	2	LIFTLUG2-900SM	SMALL	LIFT LUG	6,800#	
C	1	TF2FLAT	2"	FEMALE NPT	THRD. TANK FLANGE	DRAIN WITH STEEL PLUG



B

B



- NOTES:
- CLEAN TANK COMPLETELY AFTER WELDING.
 - INSPECT TANK FOR UNDERCUT & CONCAVE WELDS BEFORE SECOND TEST.
 - SECOND TEST TANK AFTER SILLS ARE WELDED.

PRODUCT CODE: SW150FSK28D		DESCRIPTION: 150 GALLON NON-UL SINGLE WALL SKID TANK			STEEL TANK & FABRICATING CORP.		
FOR: STOCK	CUSTOMER APPROVAL: <input type="checkbox"/> MAKE NOTED CHANGES AND RE-SUBMIT <input type="checkbox"/> APPROVED WITH CHANGES NOTED <input type="checkbox"/> APPROVED AS DRAWN SIGNATURE: _____	QUANTITY: 2	CAPACITY: 150 GAL.	APP. WEIGHT: 243 lbmass	COLUMBIA CITY, IN 46725 800-852-9102 / 260-248-8971 / FAX 260-248-8973		
PAIN: BLAST / ENAMEL WHITE		DIAMETER: 28"	LENGTH: 5'-0"	LABEL: NONE			
		MATERIAL: A36/A1011	HEADS: 12GA	SHELL: 12GA	DRAWN BY: KRM	CHECKED BY: GFS	DATE: 2/13/2023
		CUSTOMER ORDER#: -	STAFCO ORDER#: -	SCALE: 1 / 10	FILE NAME: SW150FSK28D.dwg		SHEET: 1 OF 1



4

3

2

1

A

A