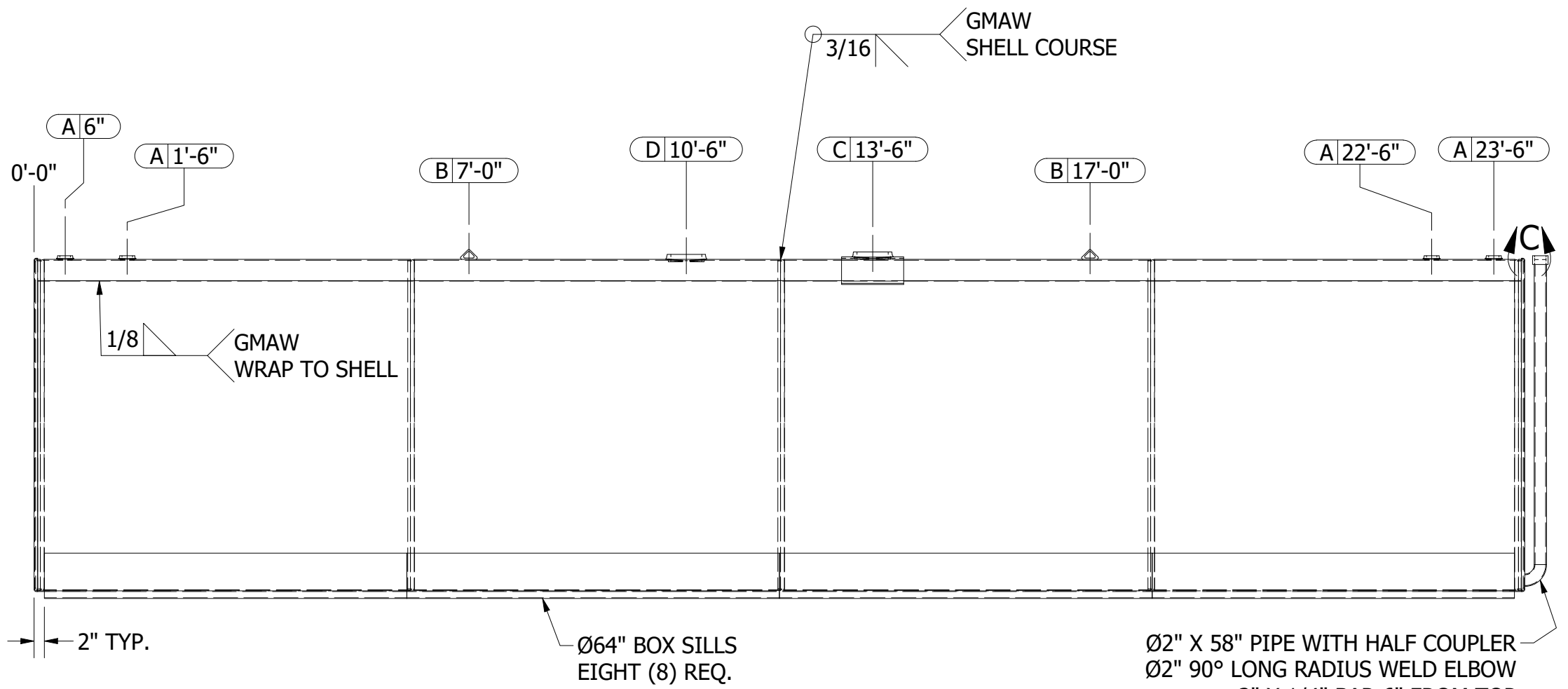
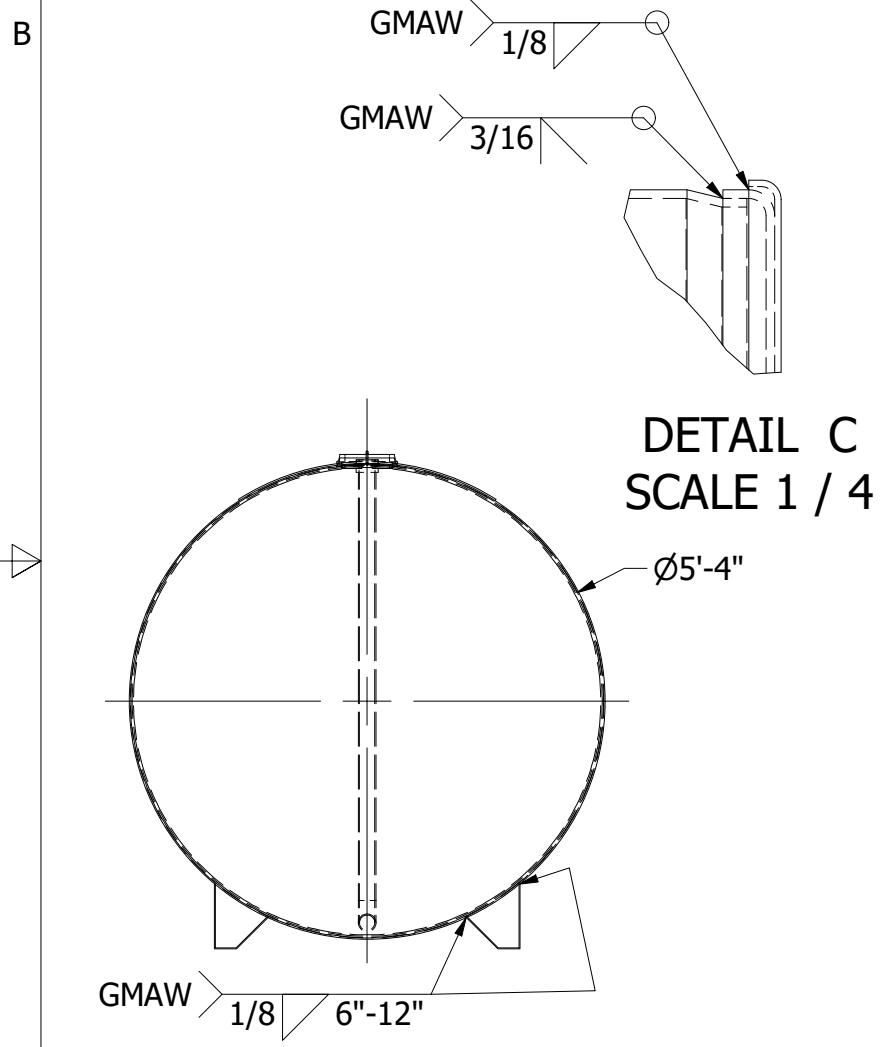
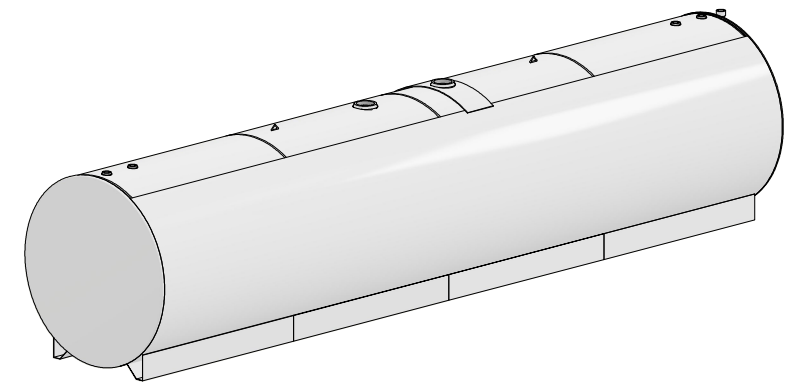


NOZZLE SCHEDULE						
ITEM	QTY.	ITEM CODE	SIZE	TYPE	CLASS	NOTES
A	4	TF2CURVED	2"	FEMALE NPT	THRD. TANK FLANGE	
B	2	LIFTLUG2-900SM	SMALL	LIFTING LUG	6,800# EACH	
C	1	TF6CURVED	6"	FEMALE NPT	THRD. TANK FLANGE	INTERSTITIAL EMERGENCY VENT
D	1	TF6CURVED	6"	FEMALE NPT	THRD. TANK FLANGE	PRIMARY EMERGENCY VENT



Ø2" X 58" PIPE WITH HALF COUPLER
 Ø2" 90° LONG RADIUS WELD ELBOW
 2" X 1/4" BAR 6" FROM TOP

- NOTES:
- CLEAN TANK COMPLETELY AFTER WELDING.
 - INSPECT TANK FOR UNDERCUT & CONCAVE WELDS BEFORE SECOND TEST.
 - SECOND TEST TANK AFTER SUPPORTS ARE WELDED.

PRODUCT CODE: DW4000ULSKT64D		DESCRIPTION: 4,000 GAL UL-142/F921 HORIZONTAL DOUBLE WALL			STEEL TANK & FABRICATING CORP.		
FOR:	CUSTOMER APPROVAL:	QUANTITY: 1	CAPACITY: 4000 GAL	APP. WEIGHT: 5809 lbmass	COLUMBIA CITY, IN 46725		
	<input type="checkbox"/> MAKE NOTED CHANGES AND RE-SUBMIT	DIAMETER: 64"	LENGTH: 24'	LABEL: UL-142 / F921	800-852-9102 / 260-248-8971 / FAX 260-248-8973		
	<input type="checkbox"/> APPROVED WITH CHANGES NOTED	MATERIAL: A36/A1011	HEADS: 7GA 10GA	SHELL: 7GA 10GA	DRAWN BY: KRM	CHECKED BY: GFS	DATE: 6/28/2024
	<input type="checkbox"/> APPROVED AS DRAWN	CUSTOMER ORDER#:	STAFCO ORDER#:	SCALE: 1/26	FILE NAME: DW4000ULSKT64D.dwg		SHEET: 1 OF 1
PAINT: BLAST / ENAMEL WHITE	SIGNATURE: _____						

