

4

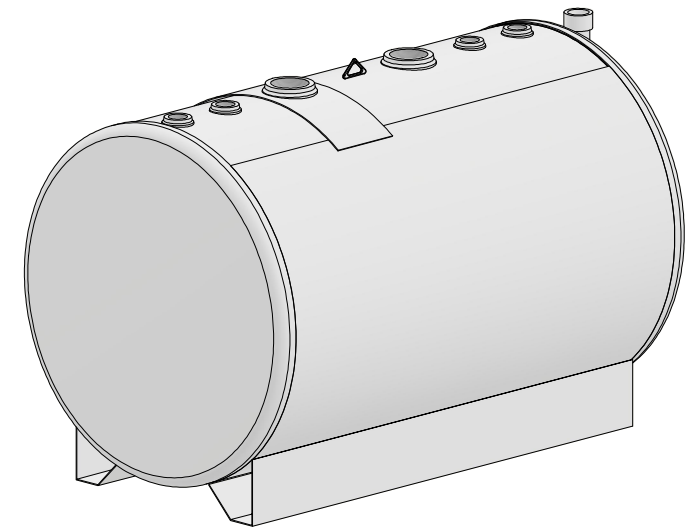
3

2

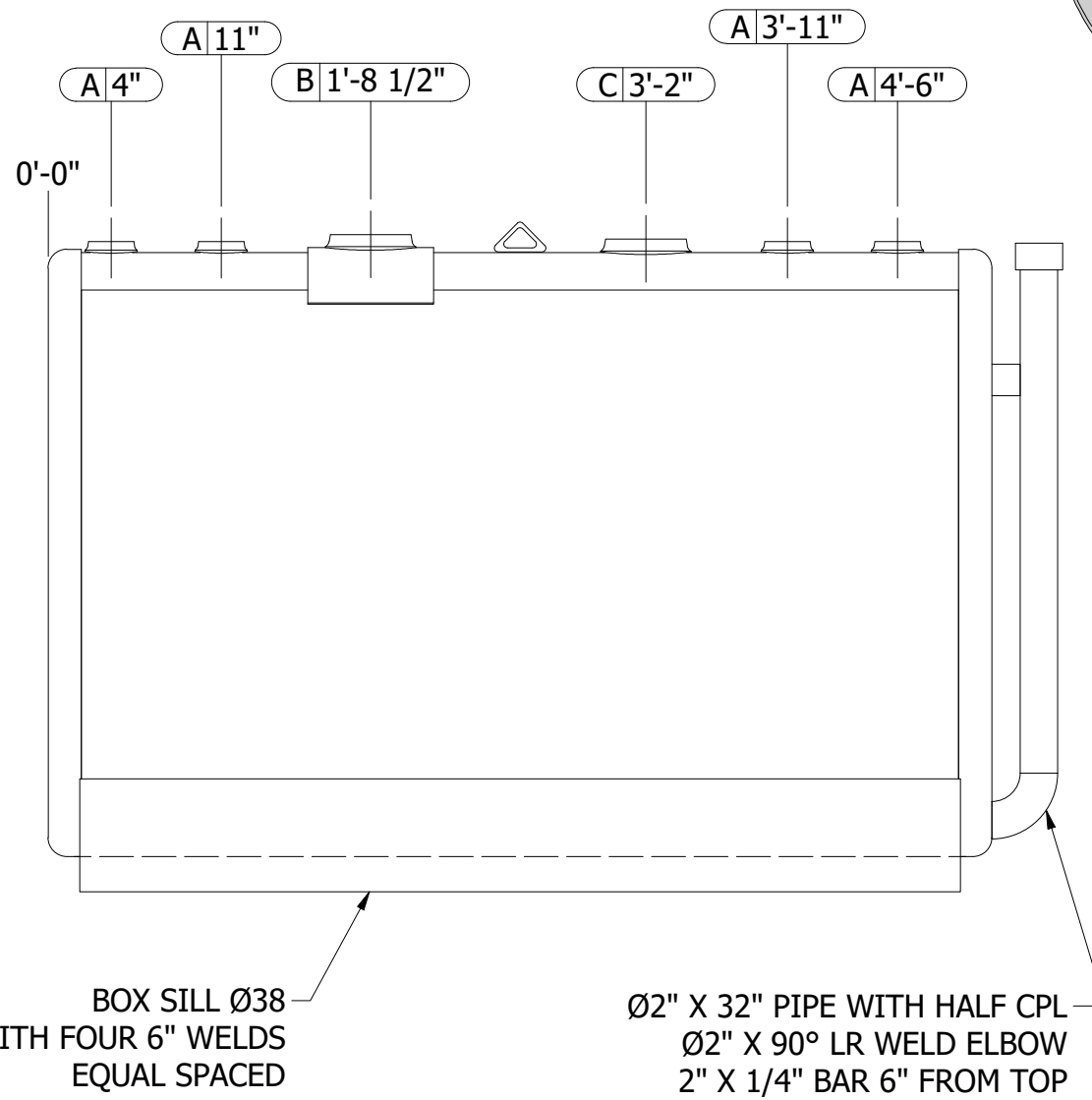
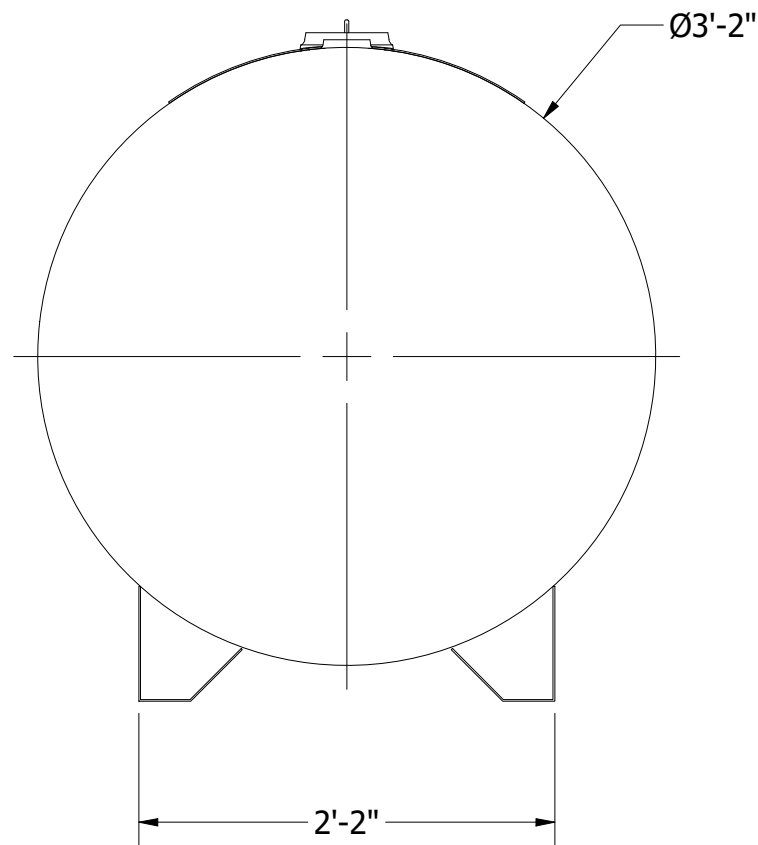
1

NOZZLE SCHEDULE

ITEM	QTY.	ITEM CODE	SIZE	TYPE	CLASS	NOTES
A	4	TF2CURVED	2"	FEMALE NPT	THRD. FLANGE	
B	1	TF4CURVED	4"	FEMALE NPT	THRD. FLANGE	INTERSTITIAL EMERGENCY VENT
C	1	TF4CURVED	4"	FEMALE NPT	THRD. FLANGE	PRIMARY EMERGENCY VENT
D	1	LIFTLUG2-900SM	SMALL	LIFT LUG	6,800# EACH	



B




B

A

- NOTES:
- CLEAN TANK COMPLETELY AFTER WELDING.
 - INSPECT TANK FOR UNDERCUT & CONCAVE WELDS BEFORE SECOND TEST.
 - SECOND TEST TANK AFTER SILLS ARE WELDED.

A

PRODUCT CODE: DW300ULSKT38D		DESCRIPTION: 300 GALLON DOUBLE WALL UL-142 Ø38" X 5-0"			STEEL TANK & FABRICATING CORP. COLUMBIA CITY, IN 46725 800-852-9102 / 260-248-8971 / FAX 260-248-8973		
FOR: STOCK	CUSTOMER APPROVAL: <input type="checkbox"/> MAKE NOTED CHANGES AND RE-SUBMIT <input type="checkbox"/> APPROVED WITH CHANGES NOTED <input type="checkbox"/> APPROVED AS DRAWN	QUANTITY: 6	CAPACITY: 300 GAL	APP. WEIGHT: 599 lbmass			
PAIN: BLAST/PRIMER	SIGNATURE: _____	DIAMETER: 38"	LENGTH: 5'	LABEL: UL-142			
		MATERIAL: A36/A1011	HEADS: 12GA 12GA	SHELL: 12GA 12GA	DRAWN BY: KRM	CHECKED BY: GFS	DATE: 4/25/2024
		CUSTOMER ORDER#: -	STAFCO ORDER#: -	SCALE: 1 / 12	FILE NAME: DW300ULSKT38D.dwg		SHEET: 1 OF 1

4

3

2

1