

4

3

2

1

NOZZLE SCHEDULE

ITEM	QTY.	ITEM CODE	SIZE	TYPE	CLASS	NOTES
A	1	TF2CURVED	2"	FEMALE NPT	THRD. TANK FLANGE	INCLUDES PLUMBING TO PUMP PLATFORM
B	1	MOR244N02001N	6"	MALE NPT	S40 PIPE	INCLUDES OVERFILL PREVENTION VALVE
C	3	TF2CURVED	2"	FEMALE NPT	THRD. TANK FLANGE	PRIMARY TANK SERVICE
D	2	LIFTLUG2-899MED	MED	HORIZONTAL LIFT LUG	20,000 LBS	WITH 3/8" X 12" X 12" REPAD
E	1	TF8CURVED	8"	FEMALE NPT	THRD. TANK FLANGE	PRIMARY EMERGENCY VENT
G	1	MW24SP	24"	MANWAY	ABOVE LIQUID	WITH GASKET, NUTS, BOLTS, WASHERS
I	1	TF8CURVED	8"	FEMALE NPT	THRD. TANK FLANGE	INTERSTITIAL EMERGENCY VENT
K	1	TF3CURVED	3"	FEMALE NPT	THRD. TANK FLANGE	WORKING VENT

Dimensions and nozzle locations:

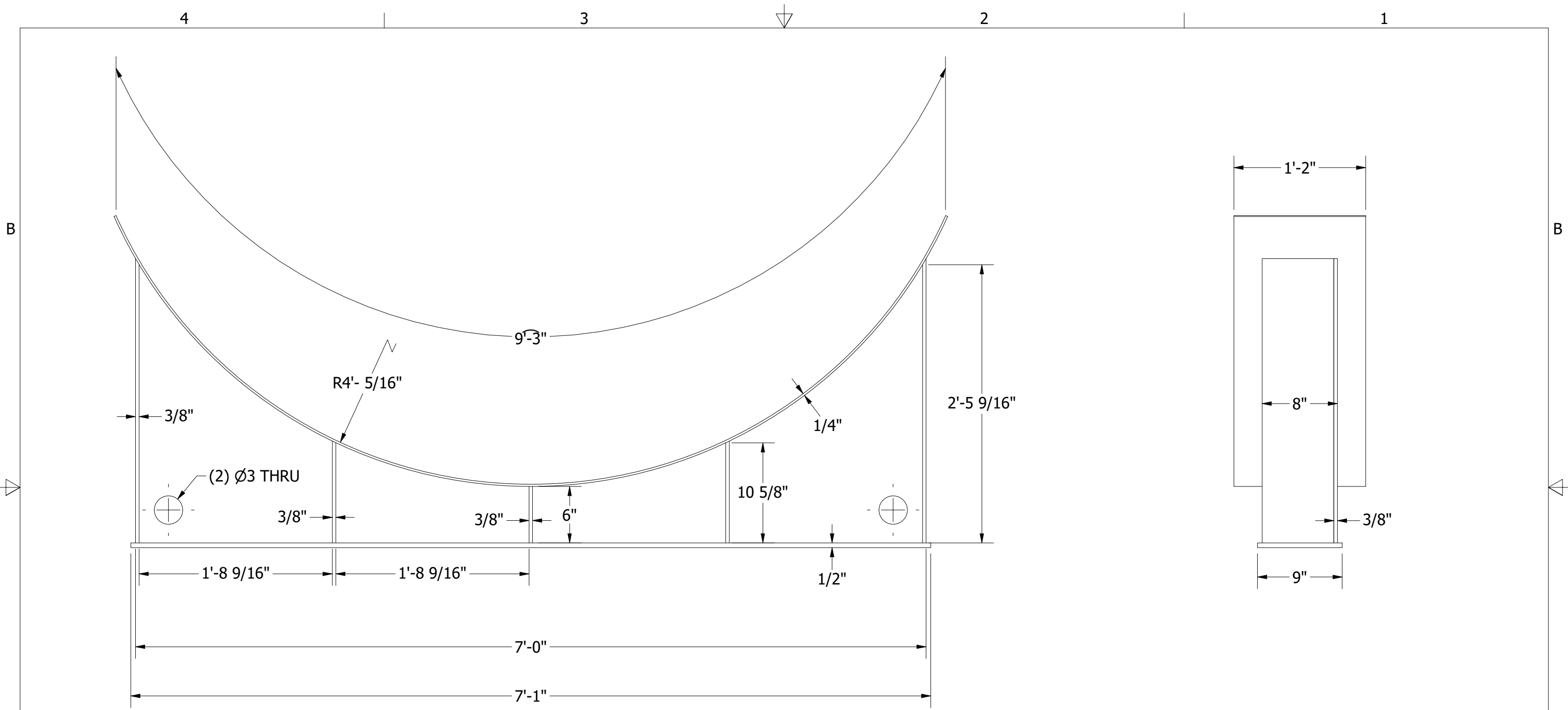
- Top View: Diameter $\varnothing 8'-0''$, Remote Fill Box height 3'-6", distance from center to nozzle 2'-0".
- Side View: Total length 27'-0", nozzle heights: A 6", B 1'-6", C 2'-6", D 8'-6", E 11'-0", G 13'-6", I 16'-0", D 18'-6", K 24'-0", C 25'-0", C 26'-0".
- Manway (G) height: 2'-0" TYP.

NOTES:

- CLEAN TANK COMPLETELY AFTER WELDING.
- INSPECT TANK FOR UNDERCUT & CONCAVE WELDS BEFORE SECOND TEST.
- SECOND TEST TANK AFTER SUPPORTS ARE WELDED.

$\varnothing 2''$ X 90" PIPE WITH HALF COUPLING
 $\varnothing 2''$ X 90° LONG RADIUS WELD ELL
 2" X 1/4" BAR REINFORCE 6" FROM TOP

PRODUCT CODE: H10KDWUL96DPS2CSGFPPEN		DESCRIPTION: 10,000 GALLON HORIZONTAL DOUBLE WALL UL-142/F921 TANK			STEEL TANK & FABRICATING CORP.		
FOR: STOCK		CUSTOMER APPROVAL:		QUANTITY: 1	CAPACITY: 10,000 GAL	APP. WEIGHT: 13577 lbmass	COLUMBIA CITY, IN 46725 800-852-9102 / 260-248-8971 / FAX 260-248-8973
PAINT: BLAST / ENAMEL WHITE		<input type="checkbox"/> MAKE NOTED CHANGES AND RE-SUBMIT <input type="checkbox"/> APPROVED WITH CHANGES NOTED <input type="checkbox"/> APPROVED AS DRAWN SIGNATURE: _____		DIAMETER: 96"	LENGTH: 27'-0"	LABEL: UL-142 / F921	
				MATERIAL: A36/A1011	HEADS: 5/16 1/4"	SHELL: 1/4" 10GA	DRAWN BY: KRM
				CUSTOMER ORDER#: -	STAFCO ORDER#: -	SCALE: 1 / 32	CHECKED BY: GFS
							DATE: 1/18/2024
							FILE NAME: H10KDWUL96DPS2CSGFPPEN.dwg
							SHEET: 1 OF 4

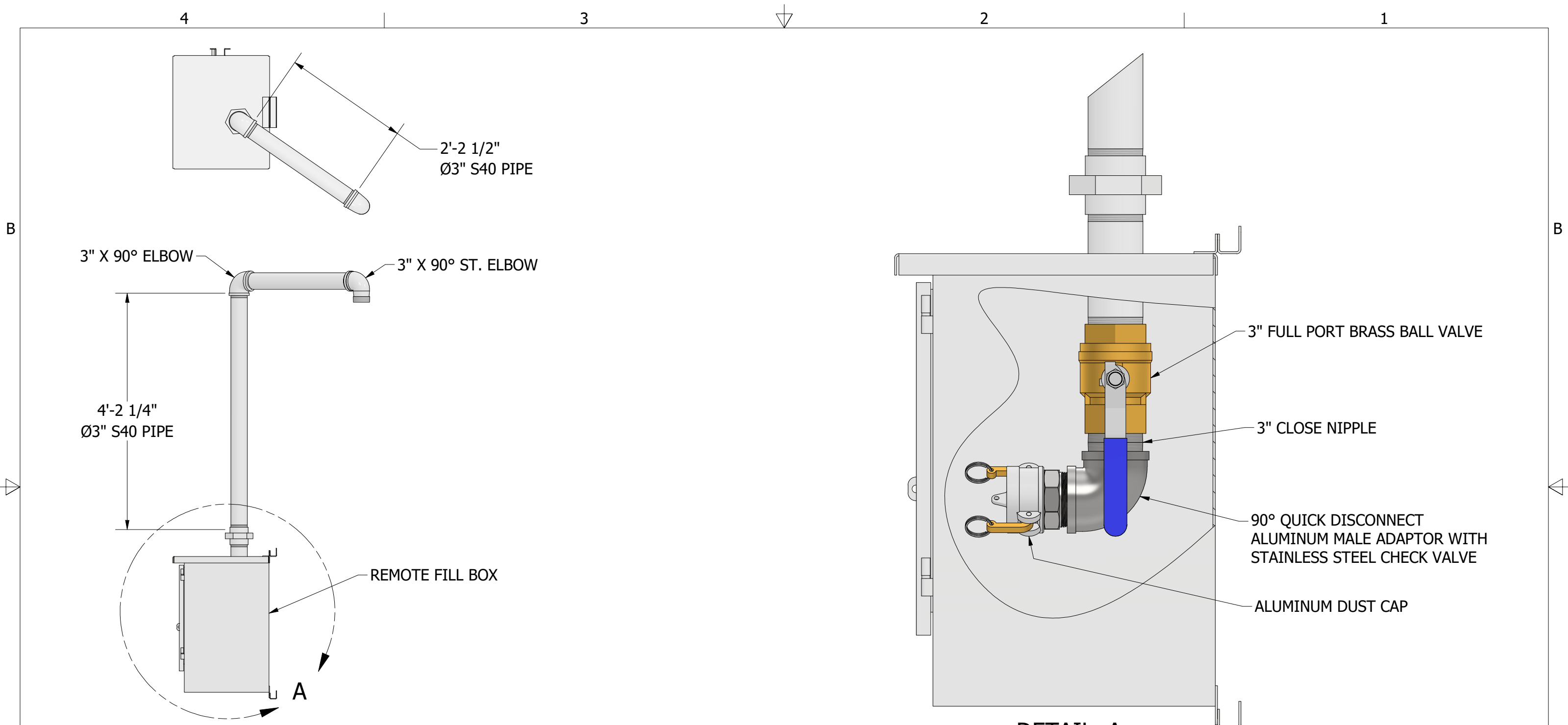


NOTES:

1. CLEAN TANK COMPLETELY AFTER WELDING.
2. INSPECT TANK FOR UNDERCUT & CONCAVE WELDS BEFORE SECOND TEST.
3. SECOND TEST TANK AFTER SUPPORTS ARE WELDED.

PRODUCT CODE: H10KDWUL96DPS2CSGFPPEN		DESCRIPTION: 10,000 GALLON HORIZONTAL DOUBLE WALL UL-142/F921 TANK			STEEL TANK & FABRICATING CORP.		
FOR: STOCK		CUSTOMER APPROVAL:		QUANTITY: 1	CAPACITY: 10,000 GAL	APP. WEIGHT: 13577 lbmass	COLUMBIA CITY, IN 46725 800-852-9102 / 260-248-8971 / FAX 260-248-8973
PAINT: BLAST / ENAMEL WHITE		<input type="checkbox"/> MAKE NOTED CHANGES AND RE-SUBMIT <input type="checkbox"/> APPROVED WITH CHANGES NOTED <input type="checkbox"/> APPROVED AS DRAWN		DIAMETER: 96"	LENGTH: 27'-0"	LABEL: UL-142 / F921	
SIGNATURE: _____		MATERIAL: A36/A1011	HEADS: 5/16 1/4"	SHELL: 1/4" 10GA	DRAWN BY: KRM	CHECKED BY: GFS	DATE: 1/18/2024
		CUSTOMER ORDER#: -	STAFCO ORDER#: -	SCALE: 1 / 10	FILE NAME: H10KDWUL96DPS2CSGFPPEN.dwg		SHEET: 2 OF 4

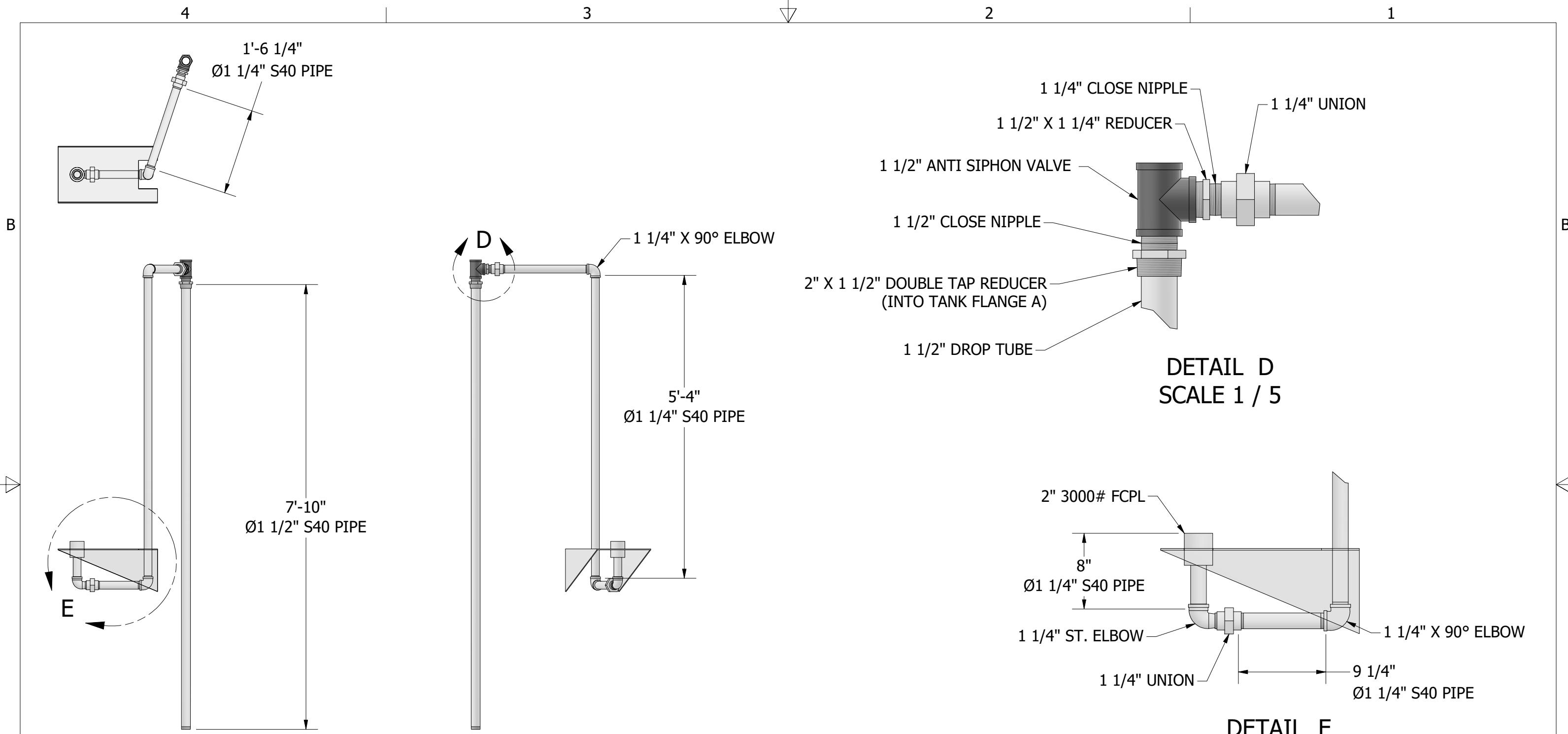




- NOTES:
1. CLEAN TANK COMPLETELY AFTER WELDING.
 2. INSPECT TANK FOR UNDERCUT & CONCAVE WELDS BEFORE SECOND TEST.
 3. SECOND TEST TANK AFTER SUPPORTS ARE WELDED.

PRODUCT CODE: 96D GROUND FILL PIPING - END		DESCRIPTION: 10,000 GALLON HORIZONTAL DOUBLE WALL UL-142/F921 TANK			STEEL TANK & FABRICATING CORP.		
FOR: STOCK		CUSTOMER APPROVAL:	QUANTITY: 1	CAPACITY: 10,000 GAL	APP. WEIGHT: 105 lbmass	COLUMBIA CITY, IN 46725	
		<input type="checkbox"/> MAKE NOTED CHANGES AND RE-SUBMIT	DIAMETER: 96"	LENGTH: 27'-0"	LABEL: UL-142 / F921	800-852-9102 / 260-248-8971 / FAX 260-248-8973	
		<input type="checkbox"/> APPROVED WITH CHANGES NOTED	MATERIAL: A36/A1011	HEADS: 5/16 1/4"	SHELL: 1/4" 10GA	DRAWN BY: KRM	CHECKED BY: GFS
PAINT: BLAST / ENAMEL WHITE		SIGNATURE: _____	CUSTOMER ORDER#: -	STAFCO ORDER#: -	SCALE: 1 / 20	FILE NAME: H10KDWUL96DPS2CSGFPPEN.dwg	DATE: 1/18/2024
							SHEET: 3 OF 4





- NOTES:**
- CLEAN TANK COMPLETELY AFTER WELDING.
 - INSPECT TANK FOR UNDERCUT & CONCAVE WELDS BEFORE SECOND TEST.
 - SECOND TEST TANK AFTER SUPPORTS ARE WELDED.

PRODUCT CODE: H10KDWUL96DPS2CSGFPPEN		DESCRIPTION: 10,000 GALLON HORIZONTAL DOUBLE WALL UL-142/F921 TANK			STEEL TANK & FABRICATING CORP.		
FOR: STOCK		CUSTOMER APPROVAL:	QUANTITY: 1	CAPACITY: 10,000 GAL	APP. WEIGHT: 13577 lbmass	COLUMBIA CITY, IN 46725	
		<input type="checkbox"/> MAKE NOTED CHANGES AND RE-SUBMIT <input type="checkbox"/> APPROVED WITH CHANGES NOTED <input type="checkbox"/> APPROVED AS DRAWN	DIAMETER: 96"	LENGTH: 27'-0"	LABEL: UL-142 / F921	800-852-9102 / 260-248-8971 / FAX 260-248-8973	
PAINT: BLAST / ENAMEL WHITE		SIGNATURE: _____	MATERIAL: A36/A1011	HEADS: 5/16 1/4"	SHELL: 1/4" 10GA	DRAWN BY: KRM	CHECKED BY: GFS
			CUSTOMER ORDER#: -	STAFCO ORDER#: -	SCALE: 1 / 20	FILE NAME: H10KDWUL96DPS2CSGFPPEN.dwg	DATE: 1/18/2024
							SHEET: 4 OF 4

